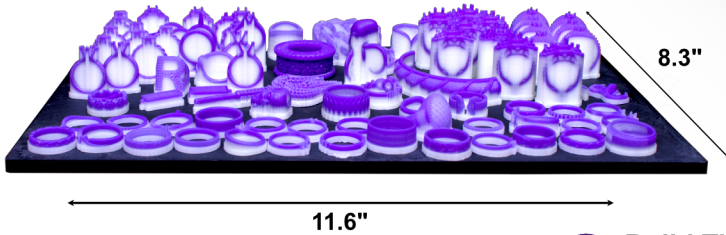


# PROJET MJP 300W

RealWax®, Real Speed, Real Results

## A Printing Mode for Every Application

The new **ProJet MJP 300W** is the most versatile **RealWax 3D Printer on the market**. ProJet MJP 300W produces 100% sacrificial casting patterns for high capacity jewelry production. With **4 printing modes** to choose from: **XHD**, **ZHD**, **QHD** and **UHD**, you can choose **ultra-high throughput**, **extreme resolution**, or **the best of both!** Weather you **extreme resolution prints for casting** or **the quickest build time for rapid prototyping**, MJP 300W has a mode for every need!



Now 40% Faster with 50% better X & Y Surface Detail!

## Features & Benefits

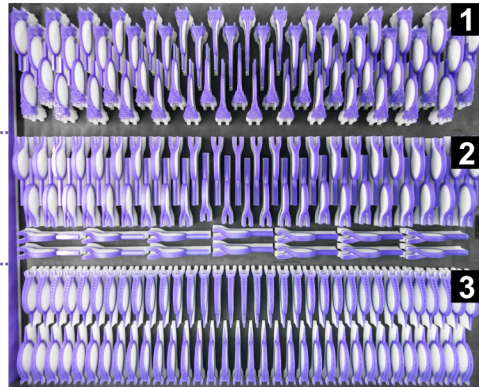
- **Unmatched speed** through **MultiJet Printing Technology**
- **Consistent casting results** with 100% **RealWax®** build & support material
- **Fast and easy post-processing** with **VisiJet® M2 dissolvable support material**
- **VisiJet® M2 Build Material** melts like standard casting waxes with **negligible ash content**

### Build Time & Quality

Mode	Time	Microns
UHD:	2.5 hrs	25 µm
XHD:	4 hrs	16 µm
ZHD:	8 hrs	8 µm
QHD:	22 hrs	8.8 µm
UHD:	5 hrs	25 µm
XHD:	8 hrs	16 µm
ZHD:	16 hrs	8 µm
QHD:	31 hrs	8.8 µm
UHD:	7.5 hrs	25 µm
XHD:	12 hrs	16 µm
ZHD:	24 hrs	8 µm
QHD:	40 hrs	8.8 µm

## MJP 300W Build Times

Rings Per Lane



67 rings  
(Lane 1)

134 rings  
(Lanes 1 & 2)

201 rings  
(Lanes 1, 2 & 3)

## VisiJet® Wax Jewel Red

### Flexible Wax Build Material

Patterns produced using **VisiJet® Wax Jewel Red** material are **durable, yet flexible**, and **can withstand handling** through the entire lost wax casting process.

They're especially advantageous in creating **lightweight filigree**, **thin wire mesh designs**, and **in-stone casting**, opening up new possibilities in wax 3D printing.

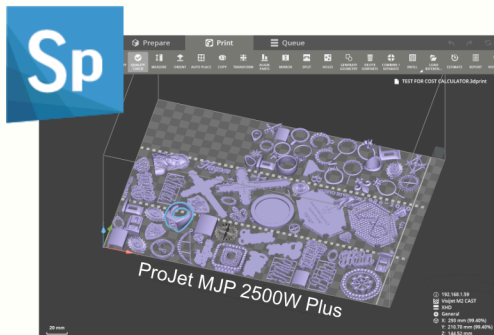
Increased productivity and cost savings by reducing the time and costs associated with fragile patterns breaking.



Supports stone-in-place casting with ease!



# GET MORE PATTERNS EVEN FASTER!



## 3D Sprint™ Software

Streamline your file-to-part workflow with the advanced 3D Sprint™ software. **Automatically arrange** CAD or STL, get **real-time print and material estimates**, switch between **XHD** and **ZHD** printing modes, and even **automatically repair** errors in your model files!

Romanoff offers **3D Sprint Software Training** to get you up to speed with your new 3D Systems purchase and straight to production in record time!

## VisiJet® Performance Casting Waxes

VisiJet® **100% wax materials** melt like standard casting waxes with **negligible ash content** in casting.

**VisiJet® M2 Cast** - Durable for handling and casting fine features. Its high-contrast purple allows for **incredible detail visualization**.

**VisiJet® Jewel Red** - For the most intricate filigree casting designs with added support for **stone-in-place casting**. Its added durability plus flexibility for opens up new possibilities for wax 3D printing.



## Repeatable, Reliable Results

Produce true-to-CAD patterns with exact, razor-sharp edge and fine feature definition for results you can rely on. Smooth surface and sidewall quality means less expensive hand finishing and faster pattern to part workflow.

Create lightweight, hollow pieces!

## VisiJet 100% Wax Materials



Material	SKU	Weight
VisiJet Jewel Red	<a href="#">68-3604W-1</a>	1.5 kg
VisiJet M2 Cast	<a href="#">68-2501W-1</a>	1.5 kg
VisiJet M2 SUW	<a href="#">68-3604W-1</a>	1.6 kg

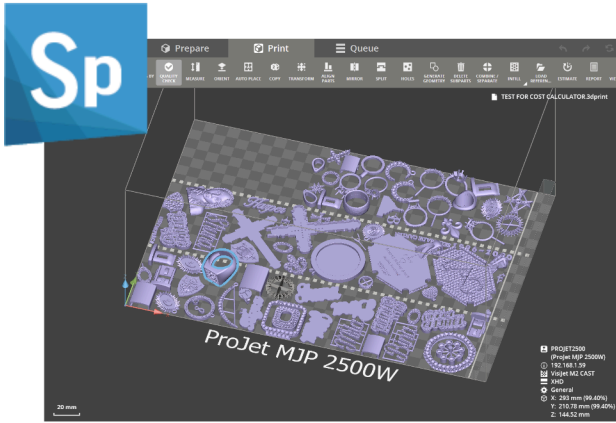
Machine Specifications	
<b>Dimensions (L x W x H)</b>	
3D Printer Crated	55" x 37" x 52"
3D Printer Uncrated	44" x 29" x 42"
<b>Weight (lbs)</b>	
3D Printer Crated	Crated: 715 lbs
3D Printer Uncrated	Uncrated: 465 lbs
<b>Included Software</b>	3D Sprint™ (1 License)
<b>Warranty</b>	1 Year Parts and Labor. Extended Warranty Available

Build Mode	QHD	ZHD	XHD	UHD
<b>Build Envelope</b>	11.6" L x 8.3" W x 5.6" H			
<b>Resolution (X, Y &amp; Z)</b>	2000 x 1800 x 2900 DPI; 8.8 µm	1200 x 1200 x 3200 DPI; 8 µm	1200 x 1200 x 1600 DPI; 16 µm	1200 x 1200 x 1000 DPI; 25 µm
<b>Typical Accuracy</b>	±0.004 in per in (±0.1016 mm per 25.4 mm) of part dimensions			
<b>Build Speed (1"/25 mm per hr)</b>	1 Lane: 22 hr 2 Lanes: 31 hr 3 Lanes: 40 hr	1 Lane: 8 hr 2 Lanes: 16 hr 3 Lanes: 24 hr	1 Lane: 4 hr 2 Lanes: 8 hr 3 Lanes: 16 hr	1 Lane: 2.5 hr 2 Lanes: 5 hr 3 Lanes: 7.5 hr



# 3D Sprint

## Streamlined All-In-One 3D Printing Solution



**3D Sprint®** is exclusive software from 3D Systems for preparing and optimizing CAD and polygon data and managing the additive manufacturing (AM) process for 3D Systems multi-jet printing (MJP). Included with every 3D systems 3D Printer, this robust software enables you to 3D print better parts without any additional high-priced software.

Romanoff offers optional **3D Sprint Software Training** to get you up to speed with your new 3D Systems purchase and straight to your production in record time!

### Import



Directly import native CAD files from industry-leading CAD systems, which greatly reduces the need for file repair and fixing, shortens the file preparation time, and facilitates the design-to-print process.

### Repair



Automatically analyze part geometry; correct errors for translation issues in your CAD or STL design files and bad polygon geometry in 3D scans; and select, edit, and delete polygons and intelligently fill holes and gaps in your polygon data with manual polygon editing tools.

### Place



Save custom placement styles and optimize the printer volume for maximum efficiency and productivity with comprehensive auto placement including requirement-driven orientation, dense 3D nesting, and automatic pre-printing quality checking.

### Support

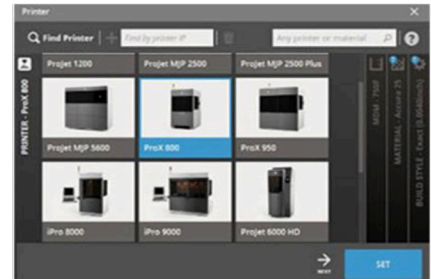


Achieve better surface quality for printed parts that are easier to remove using less material and post processing with automatic, intelligent, finely-tuned support generation and optimized preset profiles accompanied by a full range of structure and anchor point extraction parameters.

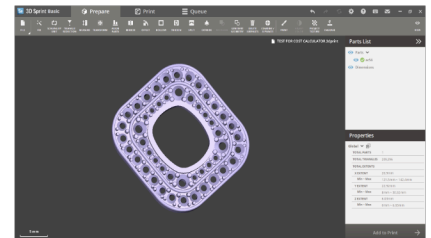
### Print



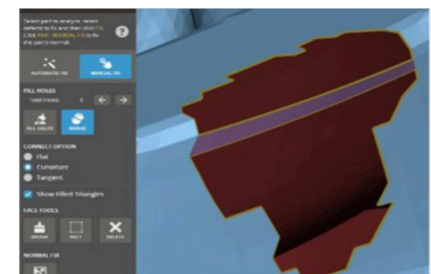
Achieve accurate and powerful slicing and accurate build time and material estimates. Submit print jobs directly from your print workspace or load 3D Sprint build files created on another system directly to the printer. Manage your directly-connected printer or get visibility for all networked or shared printers to control job priorities with queue management tools.



*Multiple Machines - One Robust Software*



*Automate Your Design Process*



*Analyze and Repair With Ease*